

Drop-in bowl dispenser Metos THSG

Heated dispenser for soup bowls. Amount of spring can be adjusted due to weight of the bowls in use

- drop-in model without side panels
- minimum height of furniture 900 mm
- with soup kettle this dispenser forms a nice soup station
- cut-out dimensions 365 mm * 305 mm
- height 680 mm



Drop-in bowl dispenser Metos THSG

Item width mm	300
Item depth mm	300
Item height mm	760
Package volume	0.082
Unit of volume	m3
Package volume	0.082 m3
Package length	32
Package width	32
Package height	80
Package unit of dimension	cm
Package dimensions (LxWxH)	32x32x80 cm
Net weight	15
Net weight	15 kg
Gross weight	17
Package weight	17 kg
Unit of weight	kg
Connection power kW	0.4
Fuse Size A	10
Connection voltage V	230
Number of phases	1NPE
Frequency Hz	50/60
Type of electrical connection	Plug
Remarks (misc.)	drop-in hole 365x305 mm

Installation on top of the table

Drop-in bowl dispenser THSG.02

Dimensions:

A x B = flange

E x F = cut out tube

l x b = tube internal

H = build in height

G = flange height

S = effective stacking height

p x q = operating panel

c = build in depth operating panel

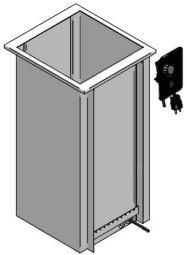
y x z = cut out operating panel

m x n = screw-hole centres operating panel

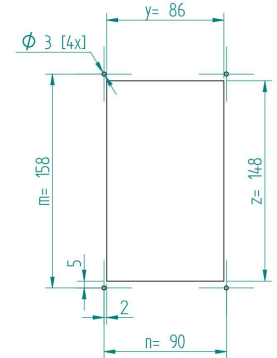
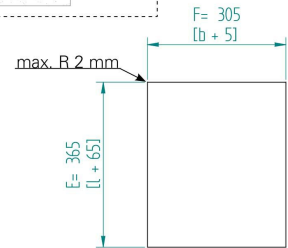
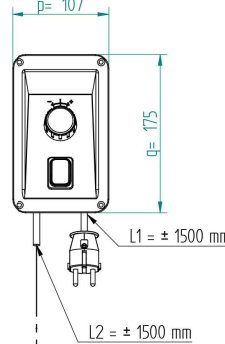
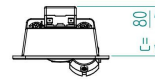
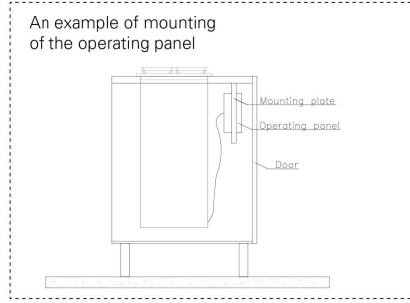
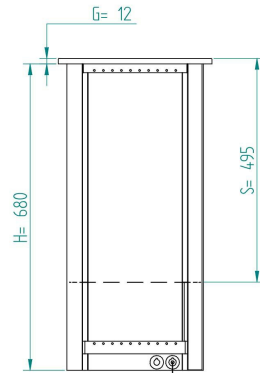
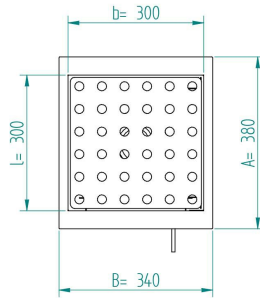
heating element 230V, 400W, 10A

weight (empty): 15 kg

The counter, where drop-in units are installed, must be damp-proof and strong enough to bear the appliance weight.



When constructing the counter, an opening for the connection cable must be considered. The opening must be at least the size of a plug (diameter min. 40 mm). In addition, the edges of the opening must be finished to make sure that the connection cable is not damaged by rubbing against the opening edge.



L1 = length cable with plug
L2 = length cable between tube and operating panel