

# Blast chiller room Metos

## MBC202SB-RI

Metos Blast chiller room BC202SB-RI for one GN 2/1 trolley or 2 pcs GN 1/1 trolleys

- floorless
- roll-in model
- inner depth 1150 mm
- door opening width 880 mm
- net height door 1820 mm
- chilling capacity 150 kg; stated blast chilling capacity kg/h is nominal, and cannot be achieved with all food products and circumstances
- cooling capacity( -25 / + 45 ° C ) 7960 W
- panel construction
- stainless steel exterior (Scotch-Brite satin)
- inner in stainless steel with rounded corners
- insulation in high density (42 kg/m³ approx.) expanded polyurethane, 80 mm thick, HCFC-free
- copper-aluminum evaporator with cataphoresis anti-corrosion treatment
- high-ventilation evaporator to ensure the highest efficiency of the cooling system
- anti-condensation resistance, placed on the door under the gasket
- hinged door with gasket and closing ramp system
- vertical ergonomic door handle with magnetic closure
- thick stainless steel internal bumper to avoid damage caused by the trolley
- external stainless steel protection to protect the control-board
- heated core probe, with 4 measuring points
- standard active chamber sterilization system with active ions (HI-GIENE) activated by the control
- pre-cooling function
- adjustment of the speed of the evaporator fans
- automatic storing at end of blast chilling
- indirect blowing electronic fans, efficient but gentle on food
- 7" high-definition IPS capacitive TOUCH display, easy to use
- processes



identifiable through photos

- USB connection for uploading and downloading data and recipes
- circuit breaker for compressor protection
- electrical connections positioned frontally in the panel equipped with safety locks
- class T (ambient temperature + 43 ° C)
- remote condensing unit and possibility to have stainless steel protective cover
- predisposition for R452A refrigerant fluid identifiable through photos
- USB connection for uploading and downloading data and recipes
- circuit breaker for compressor protection
- electrical connections positioned frontally in the panel equipped with safety locks
- class T (ambient temperature + 43 ° C)
- remote condensing unit and possibility to have stainless steel protective cover
- predisposition for R452A refrigerant fluid

## Blast chiller room Metos MBC202SB-RI

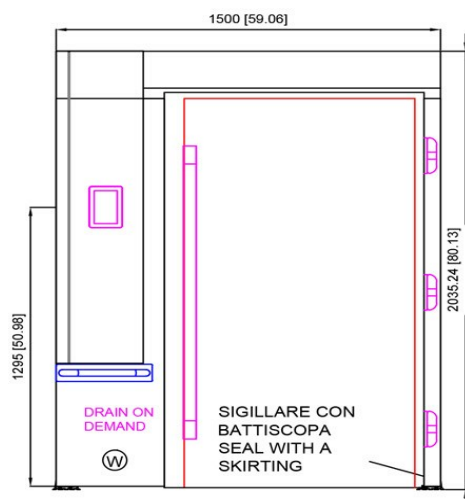
Product capacity	180kg/+70...+3°C
Item width mm	1500
Item depth mm	1530
Item height mm	2040
Package volume	7.35
Unit of volume	m3
Package volume	7.35 m3
Package length	240
Package width	176
Package height	174
Package unit of dimension	cm
Package dimensions (LxWxH)	240x176x174 cm
Net weight	442
Net weight	442 kg
Gross weight	630
Package weight	630 kg
Unit of weight	kg
Connection power kW	6.188
Fuse Size A	10
Connection voltage V	400
Number of phases	3NPE
Frequency Hz	50
Protection rating (IP)	54
Type of electrical connection	Semifixed
Cooling capacity W	7960
Condensing temperature °C	+45
Evaporation temperature °C	-25
Type of the refrigerant	R452A/R448A/R449A
Remarks (refrigeration)	Remote cooling

**Blast chiller room Metos MBC202SB-RI**

Cooling unit	Remote cooled
--------------	---------------

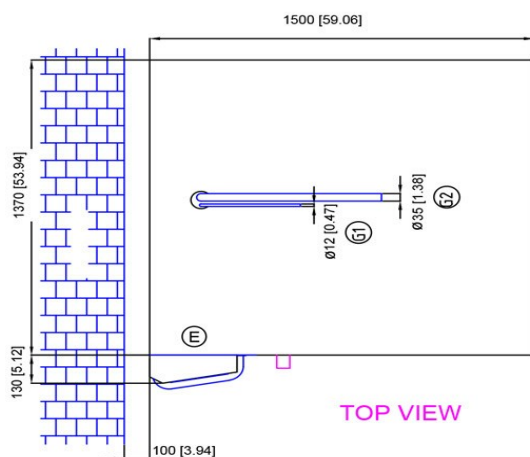
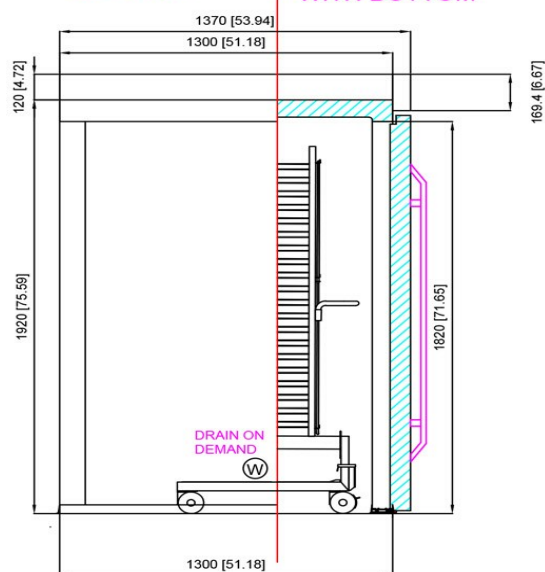
**metos**

**BC/BF202-RI**

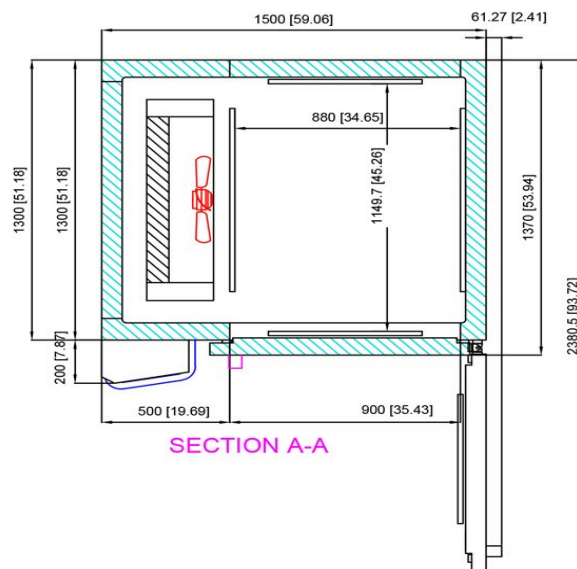


**FRONT VIEW**

**SIDE VIEW SECTION B-B WITH BOTTOM**



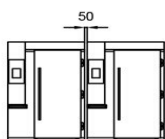
**TOP VIEW**



**SECTION A-A**

- ① INGRESSO REFRIGERANTE  
REFRIGERANT INLET
- ② USCITA REFRIGERANTE  
REFRIGERANT OUTLET
- ③ CONNESSIONE ELETTRICA  
ELECTRICAL CONNECTION
- ④ CONNESSIONE SCARICO  
DRAIN CONNECTION

DIMENSIONI mm  
DIMENSIONS [in]



SPAZIO MINIMO TRA DUE CELLE 50mm