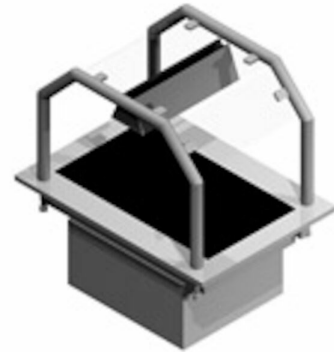


Ceramic Plate Metos Drop- In CPL 450 SKY H

Heated ceramic plate 2 x GN 1/1. Drop-in model without side panels

- unit's edge is 15 mm above the furniture's top plate
- temperature's adjusting with power controller
- SKY upper shelf with infrared radiator
- width of upper shelf 300 mm
- shelf made of hardened glass



Ceramic Plate Metos Drop-In CPL 450 SKY H

Product capacity	2 GN 1/1
Inside measures mm	450×650×355/734 mm
Item width mm	450
Item depth mm	650
Item height mm	355/734
Package volume	0.277
Unit of volume	m3
Package volume	0.277 m3
Package length	50
Package width	70
Package height	79
Package unit of dimension	cm
Package dimensions (LxWxH)	50x70x79 cm
Net weight	33
Net weight	33 kg
Gross weight	33
Package weight	33 kg
Unit of weight	kg
Connection power kW	0.46
Fuse Size A	10
Connection voltage V	220-240
Number of phases	1NPE
Frequency Hz	50/60
Startup current A	2
Protection rating (IP)	43
Type of electrical connection	Plug
Remarks (misc.)	drop-in hole 419x550 mm
Function	warm
GN size	1GN 1/1

Ceramic Plate Metos Drop-In CPL 450 SKY H

Power range kW	0.46
Shelf size mm	300
Lighting	halotherm
Upper part	with upper part
Model	Sky