

Plate Dispenser Metos

Drop-In LPD 1x320

One neutral cylinder, capacity about 60 plates. Max. diameter of plates 320 mm

- drop-in model without side panels
- drop-in hole size 382mm x 585mm
- unit's edge is 15 mm above the furniture's top plate
- recommended height of furniture 900 mm
- easily adjustable spring power according to weight of the plates

Accessories:

- Adjustment rods

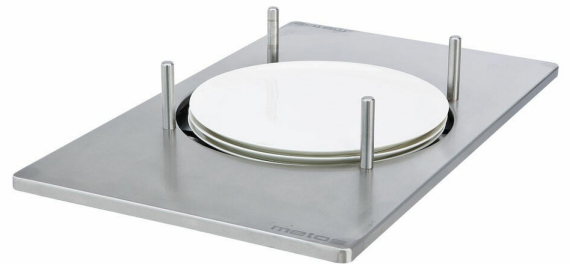


Plate Dispenser Metos Drop-In LPD 1x320

Product capacity	appr. 65 plates
Item width mm	400
Item depth mm	650
Item height mm	635
Package volume	0.264
Unit of volume	m ³
Package volume	0.264 m ³
Package length	51
Package width	70
Package height	74
Package unit of dimension	cm
Package dimensions (LxWxH)	51x70x74 cm
Net weight	10
Net weight	10 kg
Gross weight	16
Package weight	16 kg
Unit of weight	kg

**Drop-in Plate dispenser
Metos D-I LPD 320 neutral**

The counter, where drop-in units are installed, must be damp-proof and strong enough to bear the appliance weight.

When installing neutral plate dispensers, an installation frame should be mounted in the drop-in opening before lowering the cylinders. Bend down the eight tongues of the installation frame and then mount the frame. The tongues set the frame in the opening correctly. After this the cylinders are lowered into the installation frame.

Net weight:
D-I LPD 320 40 kg

Installation on top of the table

