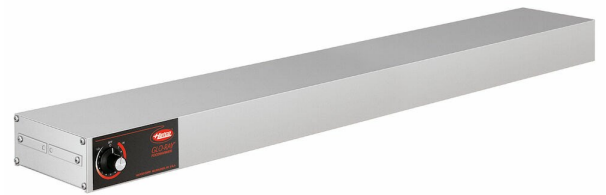


## Heat emitter Metos GRAH-42 CE CAP-EX BLTINF

Provides even heat distribution. Sturdy aluminium housing

- infrared heating elements
- reinforced wire guard for operator safety
- heavy duty insulation
- includes cord & plug
- built in infinite control for heat



## Heat emitter Metos GRAH-42 CE CAP-EX BLTINF

Product capacity	3 x GN1/1
Item width mm	1067
Item depth mm	152
Item height mm	64
Package volume	0.012
Unit of volume	m3
Package volume	0.012 m3
Package length	108
Package width	16
Package height	7
Package unit of dimension	cm
Package dimensions (LxWxH)	108x16x7 cm
Net weight	4
Net weight	4 kg
Gross weight	5
Package weight	5 kg
Unit of weight	kg
Connection power kW	0.95
Fuse Size A	6
Connection voltage V	230
Number of phases	1NPE
Frequency Hz	50
Type of electrical connection	Semifixed
Electrical conn. height mm	25
Model	Heat emitter