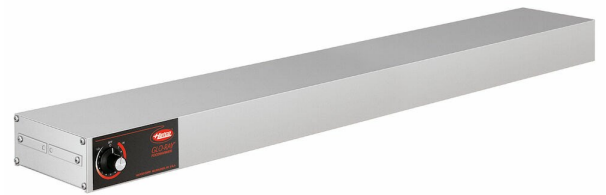


## Heat emitter Metos GRAHL-42 CE CAP-EX BLTIN with three lamps

Provides even heat distribution. Sturdy aluminium housing

- infrared heating elements
- reinforced wire guard for operator safety
- heavy duty insulation
- three lamps à 60 W
- one switch for light
- includes cord & plug
- built in infinite control for heat



## Heat emitter Metos GRAHL-42 CE CAP-EX BLTIN with three lamps

Product capacity	3 x GN1/1
Item width mm	1067
Item depth mm	229
Item height mm	64
Package volume	0.02
Unit of volume	m3
Package volume	0.02 m3
Package length	108
Package width	26
Package height	7
Package unit of dimension	cm
Package dimensions (LxWxH)	108x26x7 cm
Net weight	6
Net weight	6 kg
Gross weight	7
Package weight	7 kg
Unit of weight	kg
Connection power kW	1.13
Fuse Size A	6
Connection voltage V	230
Number of phases	1NPE
Frequency Hz	50
Type of electrical connection	Semifixed
Electrical conn. height mm	25
Model	Heat emitter