

metos

ROASTING-BAKING OVEN

CHEF 220

Installation and Operation Manual

Translation of the original documentation



S/N: 095323/02

Valid from: 01. 06. 2009
(5.1.2023)

Rev.:3.2

3751968, 3751969, 3751970, 3751971, 3751972, 3751972MO, 3751976, 3751977, 3751982, 3751983, 3751984, 3751985,
3751988, 3751988MK, 3751988MO, 3751989, 3751989MK, 3751991, 3751991MK, 3751992, 3751992MK, 3752352, 3755276,
3755785

- 1. General 3**
- 1.1. Symbols used in the manual 3
- 1.2. Symbols used on the appliance 3
- 1.3. Checking the relationship of the appliance and the manual 3
- 2. Safety 4**
- 2.1. Safe use of the appliance 4
- 2.1.1. Disposal of the appliance 4
- 3. Functional description 4**
- 3.1. Intended use of the appliance 4
- 3.1.1. Use for other purposes 4
- 3.2. Construction 4
- 3.3. Operating principle 4
- 3.3.1. Control panel switches 5
- 4. Operation instructions 6**
- 4.1. Before using the appliance 6
- 4.1.1. Choice of the ovenware 6
- 4.1.2. How to fill the oven 6
- 4.2. Operation procedures 7
- 4.2.1. Before cooking 7
- 4.2.2. How to select cooking temperature 7
- 4.2.3. Using the oven 7
- 4.2.4. Cooking 7
- 4.3.2. Steam removal 8
- 4.3. After use 8
- 4.3.1. Cleaning 8
- 4.3.4. How to change the oven bulb 9
- 4.3.5. Other service measures 9
- 5. Installation 10**
- 5.1. General 10
- 5.2. Transporting and unpacking the appliance 10
- 5.2.1. Fastening the appliance to the stand 10
- 5.2.2. Installation of a Chef oven group 10
- 5.3. Positioning the appliance 11
- 5.4. Electrical connections 11
- 5.5. Test-run 11
- 6. Troubleshooting 12**
- 7. Technical specifications 13**

1. General

Carefully read the instructions in this manual as they contain important information regarding proper, efficient and safe installation, use and maintenance of the appliance.

Keep this manual in a safe place for eventual use by other operators of the appliance.

The installation of this appliance must be carried out in accordance with the manufacturer's instructions and following local regulations. The connection of the appliance to the electric supply must be carried out by qualified persons only.

Persons using this appliance should be specifically trained in its operation.

Switch off the appliance in case of failure or malfunction. Have the appliance serviced by a technically qualified person authorized by the manufacturer and using original spare parts.

Not complying with the above may put the safety of the appliance in danger.

1.1. Symbols used in the manual



This symbol informs about a situation where a safety risk might be at hand. Given instructions are mandatory in order to prevent injury.



This symbol informs about the right way to perform in order to prevent bad results, appliance damage or hazardous situations.



This symbol informs about recommendations and hints that help to get the best performance out of the appliance.

1.2. Symbols used on the appliance



This symbol on a part informs about electrical terminals behind the part. The removal of the part must be carried out by qualified persons only.

1.3. Checking the relationship of the appliance and the manual

The rating plate of the appliance indicates the serial number of the appliance. If the manuals are missing, it is possible to order new ones from the manufacturer or the local representative. When ordering new manuals it is essential to quote the serial number shown on the rating plate.

2. Safety

2.1. Safe use of the appliance



An oven is a warming device which heats up when used. For this reason, please observe the following instructions to avoid the risk of burns.



The glass and edges of the door also become hot when the oven is used for longer periods.



Use oven gloves when handling hot ovenware and baking plates.



Beware of hot steam escaping from the oven when opening the oven door.



Containers filled with liquid or substances that become liquid during cooking should be placed at such a height that the user can look into the container in the oven (DIN: IEC 60335-2-42).



Do not leave the oven on completely unattended for long periods.

2.1.1. Disposal of the appliance

Once the appliance has reached the end of its useful life, it must be disposed of in compliance with local rules and regulations. The appliance may contain substances/materials which potentially have an adverse impact on the environment as well as recyclable materials. The best way of dealing with such substances is to dispose of them through a proper waste company.

3. Functional description

3.1. Intended use of the appliance

The Chef 220 roasting-baking oven is intended for cooking and browning food, baking and for heating convenience meals and keeping food warm.

3.1.1. Use for other purposes



Use of the appliance for any other purposes than that mentioned above is prohibited.



The manufacturer shall not be held liable for any situations which may arise from failure to comply with the warnings and instructions given in this manual.

3.2. Construction

In addition to a single oven, two or three ovens can be stacked on top of another on a stand forming a roasting and baking station. One or two ovens can also be replaced by a Chef 240 convection oven or a Chef 200 proving cabinet.

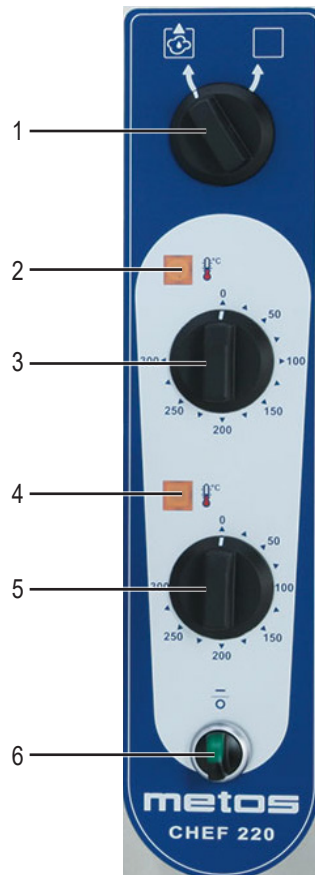
This manual covers the Chef 220 roasting-baking oven, while Chef 240 and Chef 200 have their own manuals.

3.3. Operating principle

Heating elements are fitted at the top and at the bottom of the oven. The cover plate for the lower element is formed as a tray and can be removed when cleaning the oven chamber.

The electrically heated elements heat up the air in the oven chamber. The products are roasted/baked partly through heat radiation and partly through the heated air. The upper and lower heating elements have separate thermostats, which makes it possible to set the upper and lower heating individually. The oven is also fitted with a steam outlet valve for removing superfluous steam from the oven chamber.

3.3.1. Control panel switches



Control panel switches Chef 220

1. Steam exhaust valve. The valve can be used to remove excess steam and moisture from inside the oven.
2. Upper heating on - thermostat lamp. The orange lamp is on when the heating elements are on.
3. Upper heating thermostat. To set the temperature between +50°C and +300°C.
4. Lower heating on - thermostat lamp. The orange lamp is on when the heating elements are on.
5. Lower heating thermostat. To set the temperature between +50°C and +300°C.
6. Main switch. The green light is on when the oven is switched on.

4. Operation instructions

4.1. Before using the appliance



Using the appliance for the first time or when heating elements or cooking plates have been changed, turn on plates and ovens at MINIMUM temperature for SEVERAL hours or until the insulation resistance is OK. This allows remaining humidity in the heating elements and cooking plates to dry up. In fact, on first connection, the earth insulation can be relatively inadequate, but after the above-mentioned initialization run the insulation level will normally be re-established according to CEI 18-6 part 307 regulations.



Setting the power or temperature to maximum right away at first run may damage the heating elements or the cooking plates.

In unclear cases contact our technical support: technical.support@metos.com



There is a slight smell of metal and thermal insulation when the oven is heated for the first time. This is completely normal and disappears by heating the oven. Before using the oven for the first time, heat it to a temperature of +250°C until the smell disappears.

4.1.1. Choice of the ovenware

Choice of the ovenware

- Casseroles: GN1/1-65 mm (RST 18/8). Avoid 100 mm deep containers as these may give an uneven result.
- Oven pancakes: GN1/1-40 mm, aluminium.
- Pasties, buns, rolls: GN2/1 baking plate, aluminium.
- Convenience meals: GN2/1 grid, RST 18/8.

4.1.2. How to fill the oven

Correct filling of the oven and the right choice of ovenware ensure the best possible cooking result.

Place the products on the lower pair of guide rails. The top pair of guide rails is used only for gratinating by turning the upper heating thermostat to the maximum setting.

The oven capacity is 1 pc GN1/1 or 2 pcs GN1/1 containers or baking plates. Especially when baking it is important to load the oven correctly in order to achieve a good baking result. For instance 20-30 buns is the correct amount on a GN2/1 baking plate.



If you use grids or baking plates, leave a generous space between the products you are cooking.

4.2. Operation procedures

4.2.1. Before cooking

The oven must be preheated to cooking temperature before actual cooking begins. This is to heat the whole oven to the correct temperature so as to ensure the best possible cooking results.

- Put the guide rails in place.
- Turn the main switch on. The green light turns on.
- Set both thermostats at 250°C, if the oven is loaded to max. capacity with cold products. (After loading the oven, required roasting temperature is set.) If smaller amounts of products are roasted, the preheating can be done with the roasting temperature.
- When the door is closed, the oven will remain hot for a long time, even though it is not switched on.

4.2.2. How to select cooking temperature

Cooking time depends on food quality, weight and thickness. The shallower the food to be cooked is, the shorter the cooking time. See "Cooking tips" later in this chapter.

4.2.3. Using the oven



If the oven is used on board a ship, the oven guide rails must be positioned inside the oven so that the clip which prevents the ovenware from sliding out of the guide is on the door side. Should the clip be against the rear wall inside the oven, remove the rails and swap them around.

There is a main supply disconnection switch that was fitted near the oven (usually on the wall) when the oven was installed. Ensure that this switch is in the ON position.

Oven functions are operated from the control panel (see Figure "Control panel switches" in Chapter "Functional description/Operating principle").

4.2.4. Cooking

- Carefully preheat the oven as instructed in "Before cooking".
- Turn the handle to open the oven door. To close the door, push the handle until you hear a distinct click.
- Put the food in the oven.
- Set both thermostat switches (see Figure "Control panel switches") at the required cooking temperature.
- When the products are ready, you can take them out of the oven.
- Switch the power off at the main switch (see Figure "Control panel switches")
- Open the door.



In the event of interruptions in the electricity supply when the proving cabinet is in use, turn all switches to the 0 position to prevent the proving cabinet from coming on unexpectedly when the power cut has ended.



- In the event of uneven cooking check that
- the oven has been installed horizontally
 - the oven has been preheated as instructed
 - the cooking temperature is correct
 - the cooking pan is correct
 - the oven has been correctly filled.

4.3.2. Steam removal

The steam exhaust valve (see Figure “Control panel switches”) is normally closed to prevent moisture from being lost from inside the oven.

If there is too much steam inside the oven (water droplets on the bottom of cake tins), open the steam exhaust valve to remove the moisture.

The steam exhaust valve should be fully open when roasting and cooking gratin dishes.

4.3. After use

4.3.1. Cleaning



Use of a hose or pressure washer to clean the appliance is forbidden.



Before cleaning the oven, please remember that it remains hot for a long time after use.

Ovens are electrical appliances, which means that there are restrictions regarding cleaning them with water. Use of water is permitted when cleaning the oven inside. Clean the outside of the oven with a damp cloth only to avoid water getting into the air inlets. Depending on how dirty the oven is, use an alkaline substance which can be diluted in a spray bottle to loosen grease.

Daily cleaning

Spray diluted detergent solution into the inside of the cold (below +50°C) oven, and on the inside surface of the door. Heat the oven to about +50°C (not essential), switch off at the mains and let the detergent work for about 15 minutes. Use a brush or lint-free cloth to scrub the burned places. Avoid the use of steel wool and abrasive pads and use chemical cleaners instead of mechanical ones. Once a surface is scratched, dirt sticks to it much more easily.

Wipe the loosened dirt and detergent carefully with a damp cloth. After washing, dry the oven by heating.

After cleaning the inside of the oven, wipe the outside surfaces, knobs and handrail.

Cleaning the guide rails

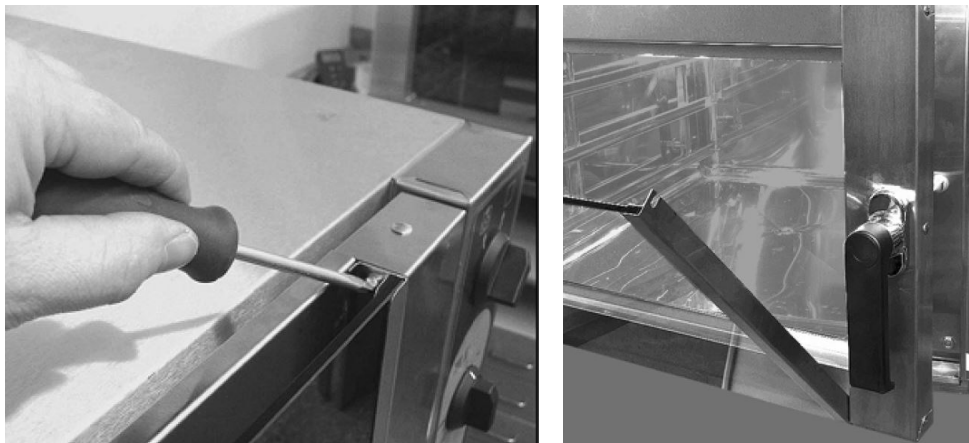
When cleaning the oven thoroughly, loosen, soak and wash the guide rails. The rails can be easily removed and conveniently washed in a dishwasher.

To remove the guide rails:

- Lift the guide rails upwards.
- Pull the guide rails towards the centre of the inside of the oven.
- Lift the guide rails out of the oven.

Replace the guide rails after cleaning.

Cleaning of external surfaces of the door



The external glass of the door can be opened for cleaning. Unscrew the two screws shown in the picture and turn the external glass carefully downward until it stays fully open. Spray diluted detergent solution onto the door's metal surfaces between the glasses and onto the glass surfaces. Let the detergent work for about 15 minutes. Wipe the loosened dirt and detergent carefully with a damp cloth. After cleaning, return the external glass to its former position. Fit the screws in place and tighten carefully.

4.3.4. How to change the oven bulb

To change the burnt lamp, do the following:

- Let the oven cool so that you can put your bare hand inside the oven without burning it.
- Ensure that the oven is switched off. All controls should be in the 0 position.
- Unscrew the lens of the oven lamp using your fingers.
- Pull the lamp out of the socket.
- Put a new lamp into the socket. Lamp type: OSRAM Halogen lamp 300°C G9 230V 25W.
- Fit the lens in place and tighten slightly.



Use of the appliance is strictly prohibited if the lens of the oven lamp is broken or not properly in place.



Do not overtighten the lens after replacement of the lamp.

4.3.5. Other service measures



This appliance does not contain parts which can be serviced by the user. Maintenance must be carried out by an authorised agent.



In the event of fault or malfunction, switch the appliance off at the mains. Use an agent authorised by the manufacturer and original spare parts.

5. Installation

5.1. General

The installation of this appliance must be carried out in accordance with the manufacturer's instructions and in compliance with local rules and regulations. These instructions must be used together with the installation drawing.



The connection of the appliance to the electric supply must be carried out by qualified persons only.

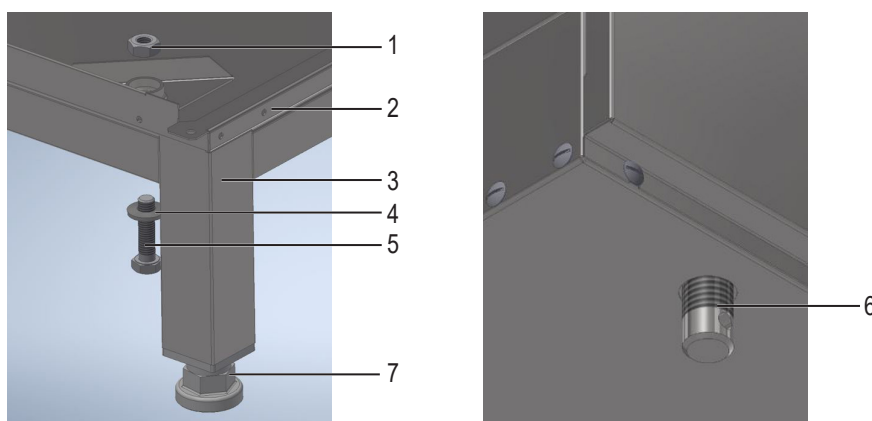
5.2. Transporting and unpacking the appliance

The appliance is best transported in its own package, which protects it from outside damage. Should it be necessary to remove the appliance from its package, the appliance, which is on a support base, must be moved by lifting by the intermediate bearers of the base. To prevent damage, the top of the appliance must not be used as a worktop during installation.

5.2.1. Fastening the appliance to the stand

Standard ovens/proving cabinets delivered separately are fastened to the stand with the help of the installation kit supplied with the appliance.

Prior to fastening the stand, remove the adjustable feet (4 pcs.) located on the appliance bottom. The feet come loose by turning by hand. Fasten the stand as shown in the illustration below, using the components 1, 4 and 5.



1. Nut, 4 pcs
2. Chef oven/proving cabinet
3. Stand
4. Washer, 4 pcs
5. Hexagon screw, 4 pcs
6. Adjustable foot in the bottom of the device, 4 pcs
7. The stand's adjustable foot, 4 pcs

5.2.2. Installation of a Chef oven group

The appliances can be assembled to form combinations of two or three units by stacking them on top of each other. The stand height for two units is 660 mm and for three units 200 mm. For assembly of the oven group a special spare parts kit is necessary. The kit can be ordered separately. Code for the spare parts kit is 3752352. Refer to your local supplier for details.

Assembly of the oven group can be carried out by an agent authorized by the manufacturer.

5.3. Positioning the appliance

When installing the appliance, care should be given to ensure that there is a free passage of cooling air around the appliance and that there are no other sources of heat near the cooling vents.

Because of the heat and steam arising during cooking, it is recommended to place the oven under an exhaust hood.



It is important to install the appliance in a level, horizontal position. Tilting and unevenness, however slight, may have an adverse effect on the cooking result.

The appliance must be placed on a flat surface and levelled into a horizontal position by using the adjustment screws on the legs. For the best result, check horizontality by the guide rails inside the proving cabinet.

To achieve a horizontal position, adjust the screws on the legs of the stand.



When the device is in the right place and in a horizontal position, it must be fixed to the floor, land models on the flanges of the rear legs and models intended for marine use on the flanges of each leg.

5.4. Electrical connections



Should maintenance require the appliance to be tested before all the protective coverings are in place, please be particularly careful of the moving parts inside the casing as well as of live parts.



To facilitate future maintenance and to increase safety, install a separate disconnection switch for the oven in the immediate vicinity of the appliance. The switch should disconnect the appliance completely from the mains supply.

The supply cable inlet is in the back right-hand corner of the oven and the connection point inside the oven. The side casing needs to be open to connect the oven to the mains.

All information needed to connect the appliance is to be found on the name plate, the connection diagram and the installation drawing.

5.5. Test-run



Please read the safety and operation instructions as well as the functional description before testing the oven. As for other appliances possibly included in the roasting and baking station, see separate manuals.

Test the oven once it has been connected to the mains electricity.

Check that

- the green oven-on lamp lights up when the oven is switched on
- the orange thermostat lamps light up when the thermostat knobs are turned in a clockwise direction
- the orange thermostat lamp goes out once the oven has heated up and reached the temperature set
- the guide rails are properly in place
- the drip tray is properly in place under the oven door.

Attach the side panel.

6. Troubleshooting

If the appliance fails to work, check to ensure that

- make sure the plug is connected to the outlet
- it has been used according to instructions
- all removable parts are in place
- the disconnection switch (usually on a wall or in the immediate vicinity of the oven) is in the ON position
- the fuses (overload protection) have not blown in the fuse box. Ask a qualified person to check the fuses.

Should the oven still not work, contact an authorised agent. Before phoning, make sure you have at hand the appliance type and serial number to be found on the name plate on the right front corner of the appliance.



This appliance does not contain parts which can be serviced by the user. Maintenance must be carried out by an authorised agent.

7. Technical specifications

Main and control circuit 83689F3

Connection diagram S01311 A1, Chef 200 + Chef 220 + (Chef 220)

Connection diagram S01311 A2, Chef 200 + Chef 220 + (Chef 220)

Connection diagram T01916F, Chef 200 + Chef 220 + Chef 240

Connection diagram T01701B3, Chef 220 + Chef 220 + Chef 220

Installation drawing T01578 C3, Chef 220

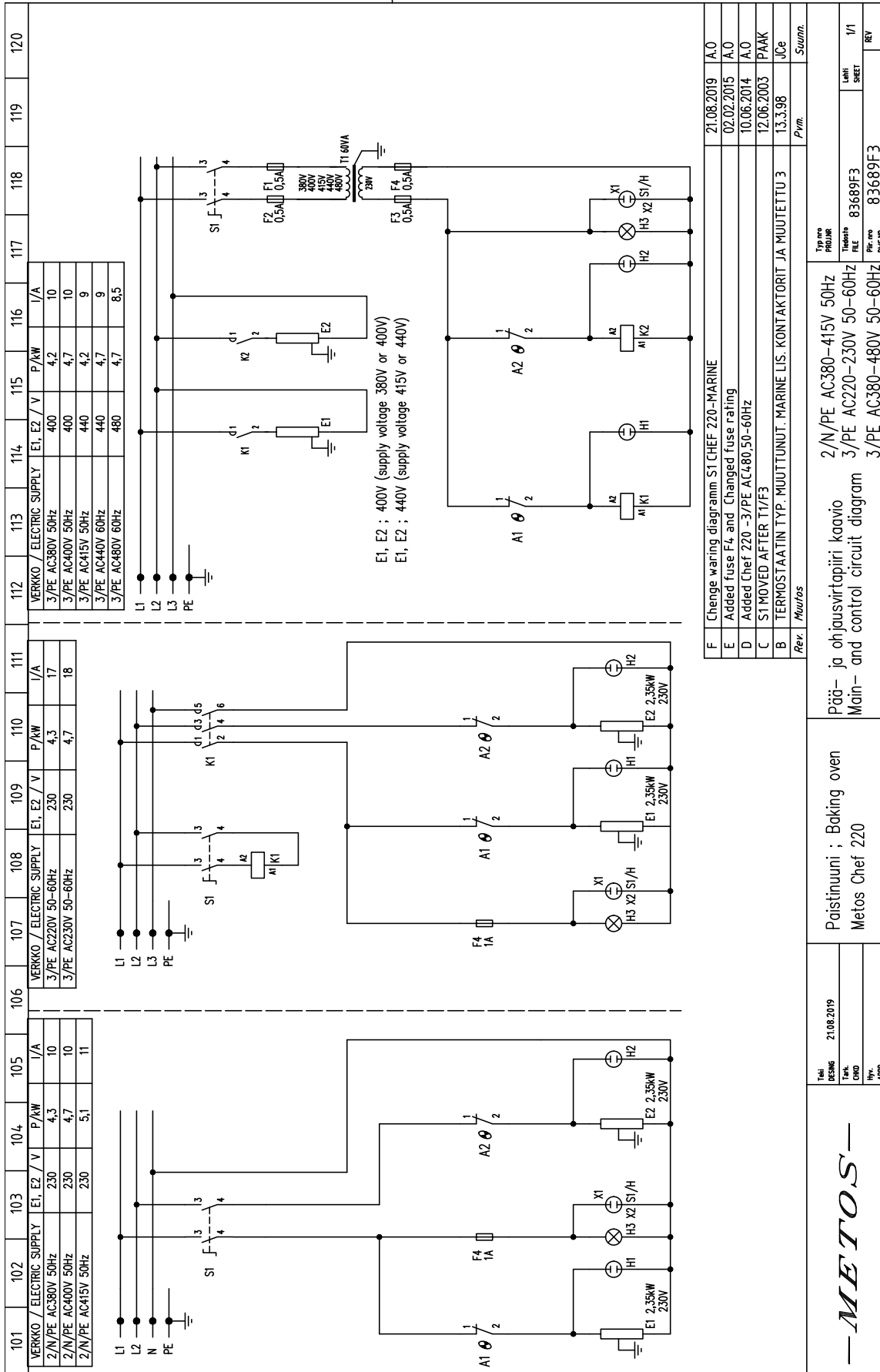
Installation drawing T01593 C3, Chef 220

Installation drawing T01594 D3 , Chef 220 + Chef 220

Installation drawing T01595 D3 , Chef 220 + Chef 220 + Chef 220

Installation drawing T01597 D3 , Chef 220 + Chef 200

Installation drawing T01596 D3 , Chef 220 + Chef 220 + Chef 200



Main and control circuit 83689F3

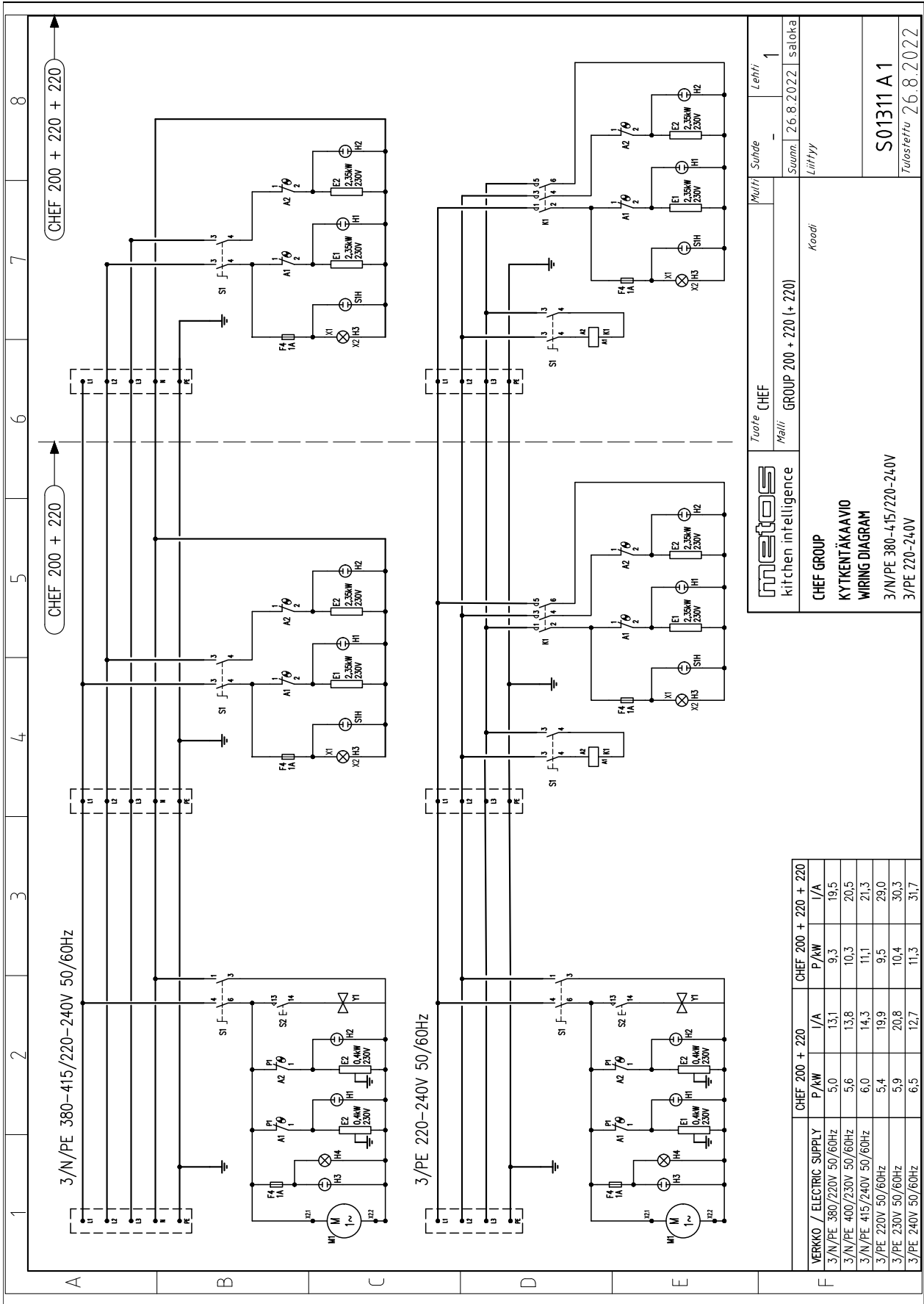
Rev.	Changes	Date	Author
F	Change wiring diagram S1 CHEF 220-MARINE	21.08.2019	A.O
E	Added fuse F4 and Changed fuse rating	02.02.2015	A.O
D	Added Chef 220 -3/PE AC480,50-60Hz	10.06.2014	A.O
C	S1 MOVED AFTER T1/F3	12.06.2003	PAAK
B	TERMOSTAATTIN TYP. MUUTTUUNUT. MARINE LIS. KONTAKTORIT JA MUUTETTU 3	13.3.98	JCe

— METOS —

Paistinuuni ; Baking oven
Metos Chef 220

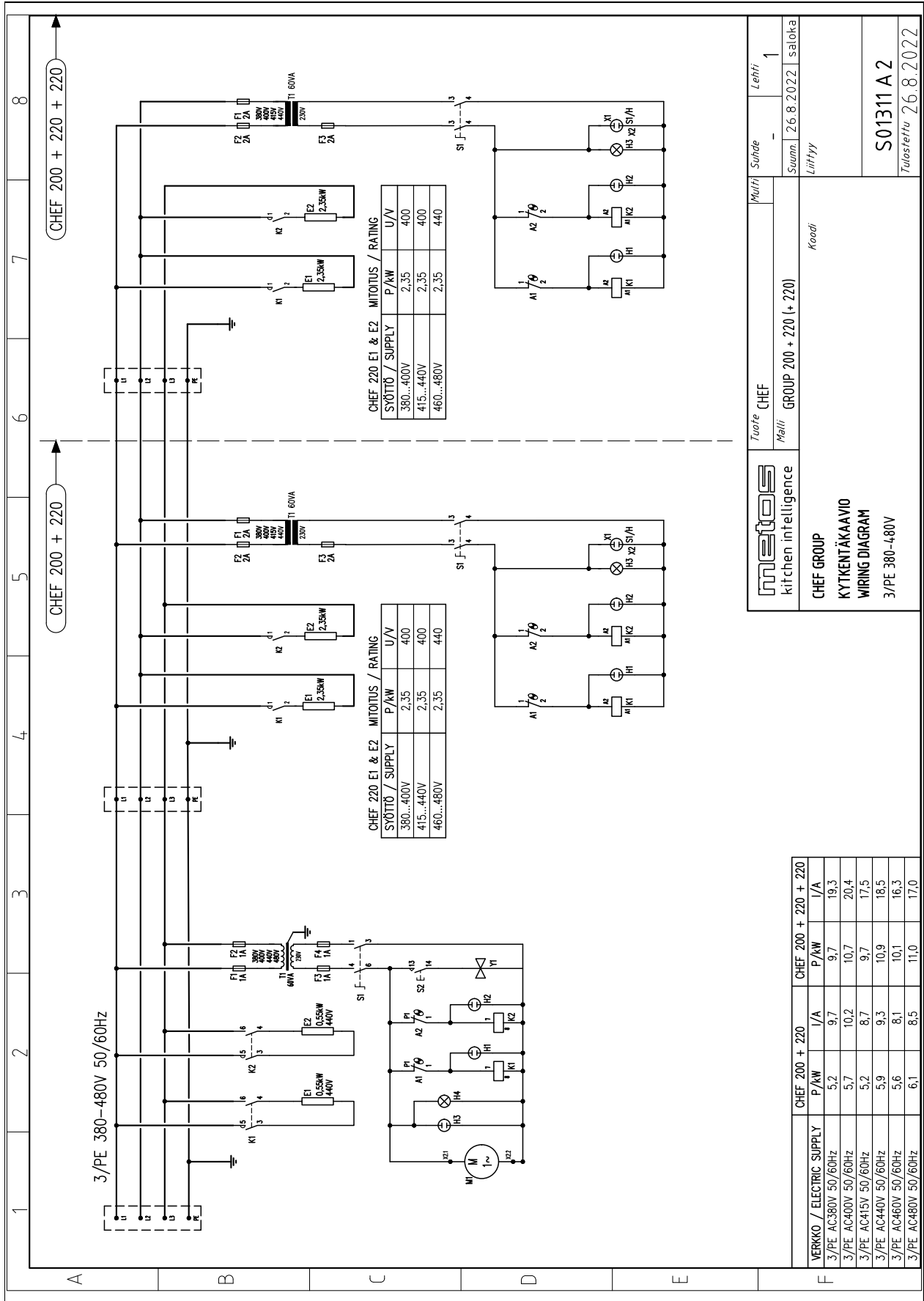
Pää- ja ohjausvirtapiiri kaavio
Main- and control circuit diagram

Typ. no
PROJUK
Tiedot
FILE
Pvm.
83689F3
83689F3

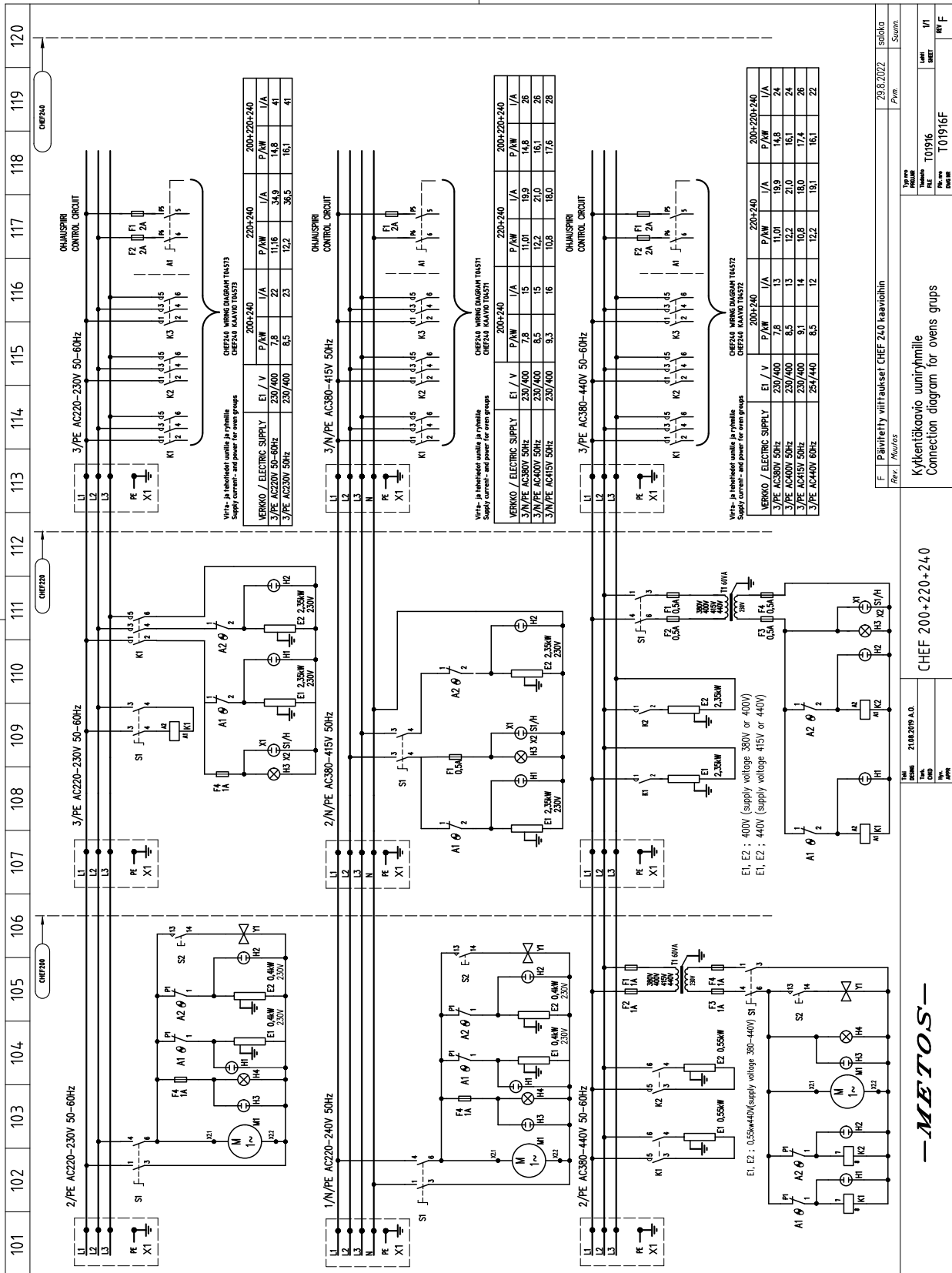


Connection diagram S01311 A1, Chef 200 + Chef 220 + (Chef 220)

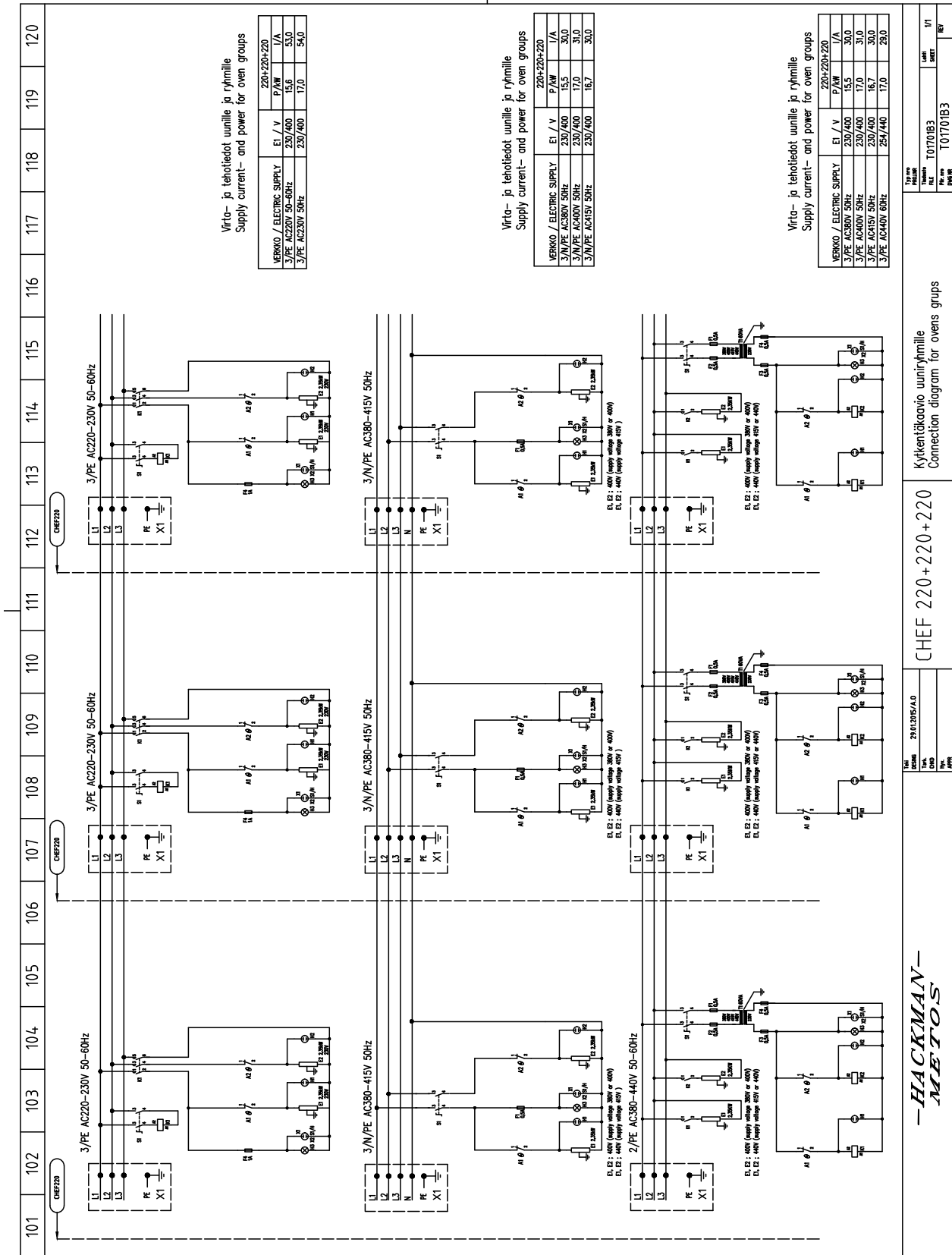
metos kitchen intelligence	Tuote CHEF Malli	Lehti 1
CHEF GROUP KYTKENTÄKAAVIO WIRING DIAGRAM 3/N/PE 380-415/220-240V 3/PE 220-240V	GROUP 200 + 220 (+ 220) koodi	Swann. 26.8.2022 Liitty
		saloka
		S01311 A1
		Tuositettu 26.8.2022



Connection diagram S01311 A2, Chef 200 + Chef 220 + (Chef 220)



Connection diagram T01916F, Chef 200 + Chef 220 + Chef 240

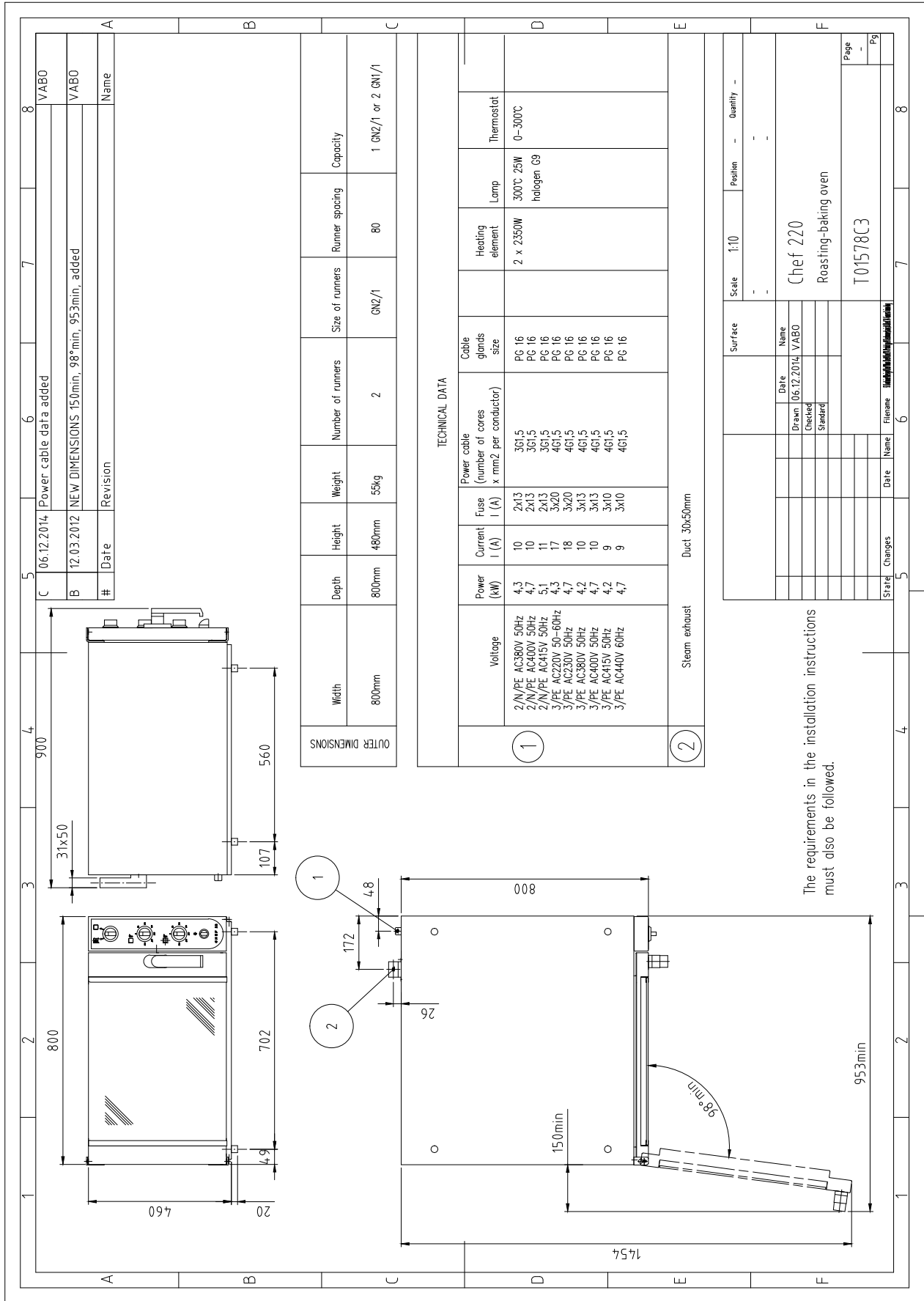


Connection diagram T01701B3, Chef 220 + Chef 220 + Chef 220

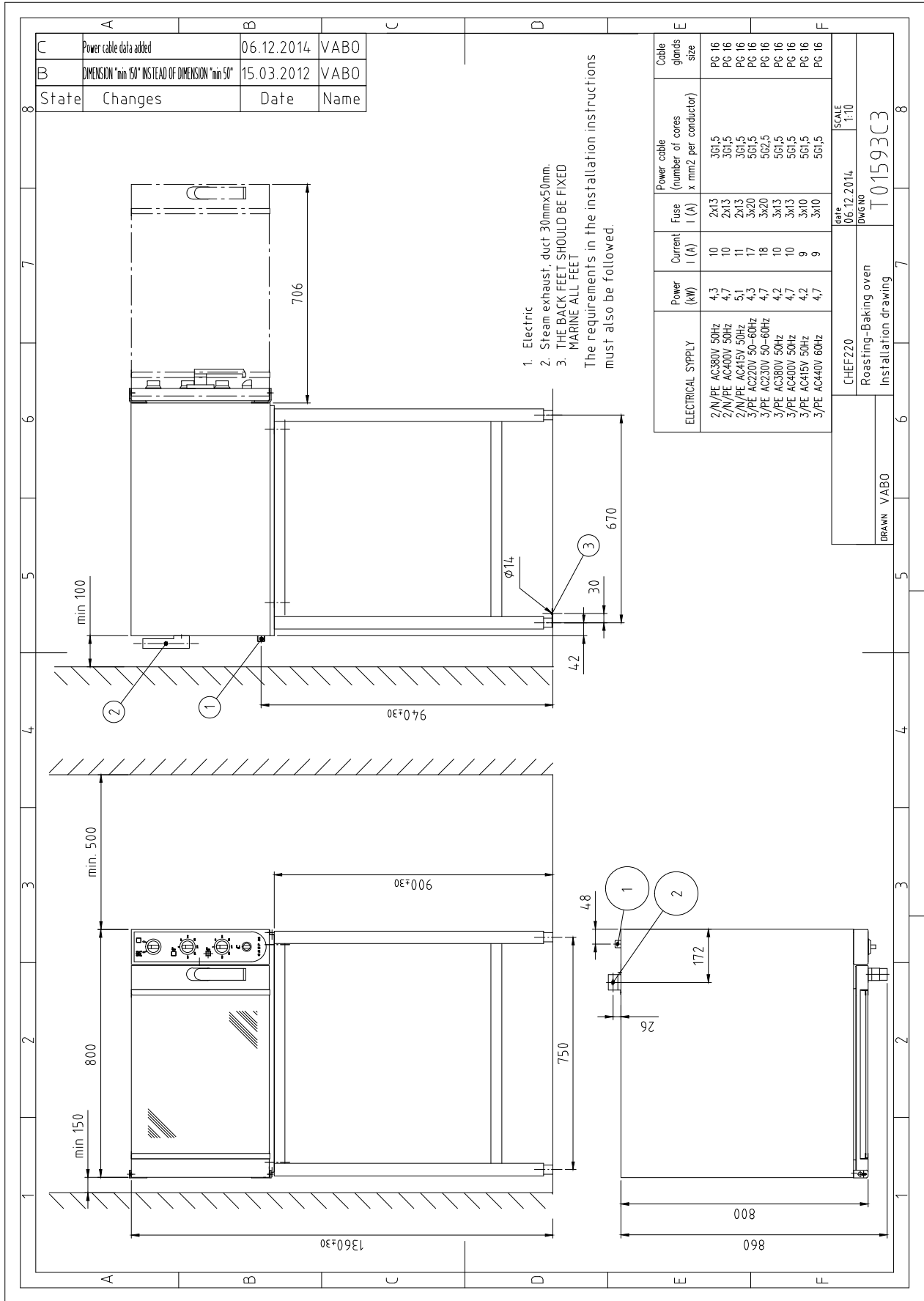
-HACKMAN-
METOS

Kytentikaavio uuniryhmille
Connection diagram for oven groups

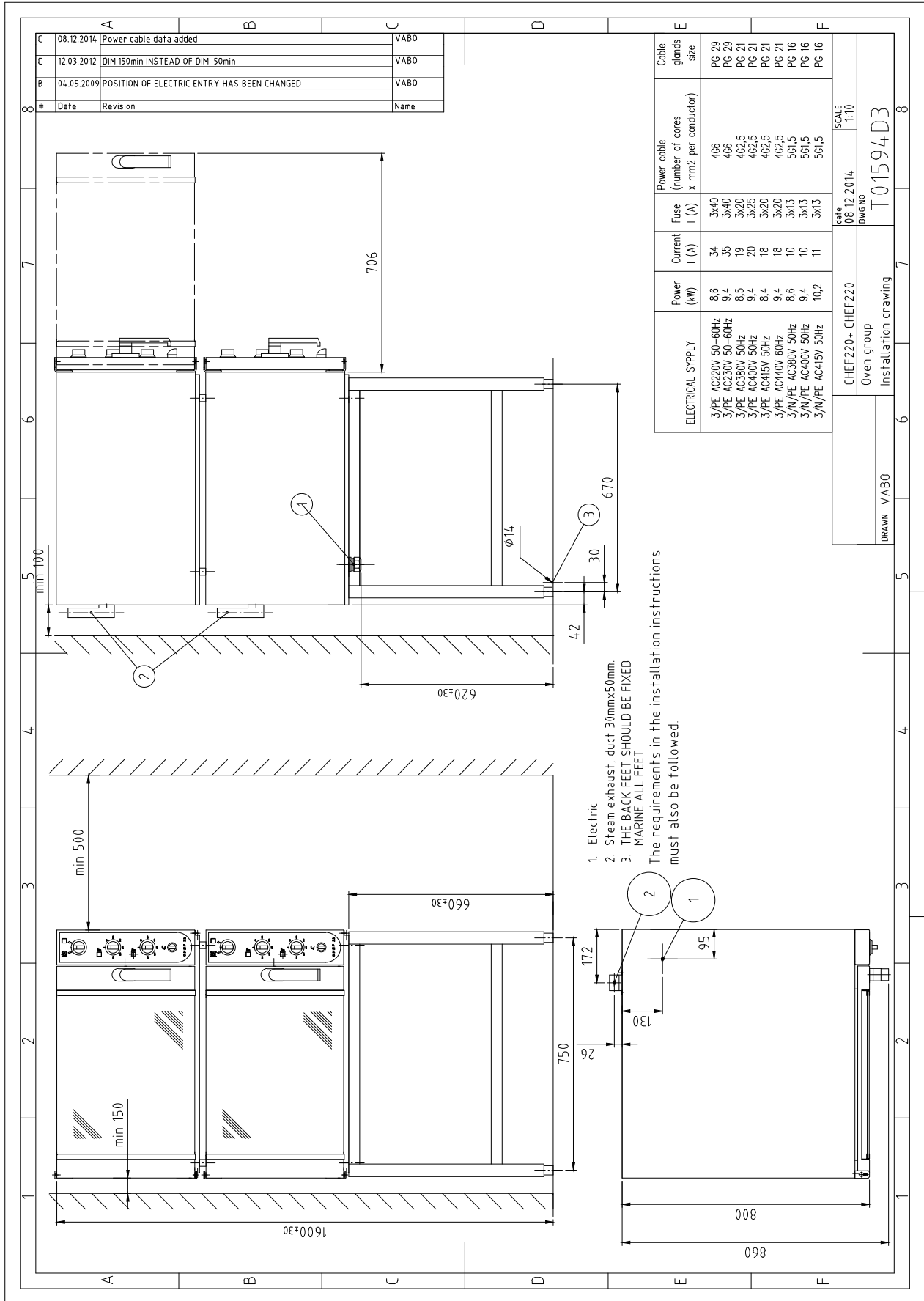
Model	2913305/A/O
Task	
Code	
Rev.	
Page	
Doc. no.	T01701B3
Page no.	T01701B3
Sheet	VI
Rev.	



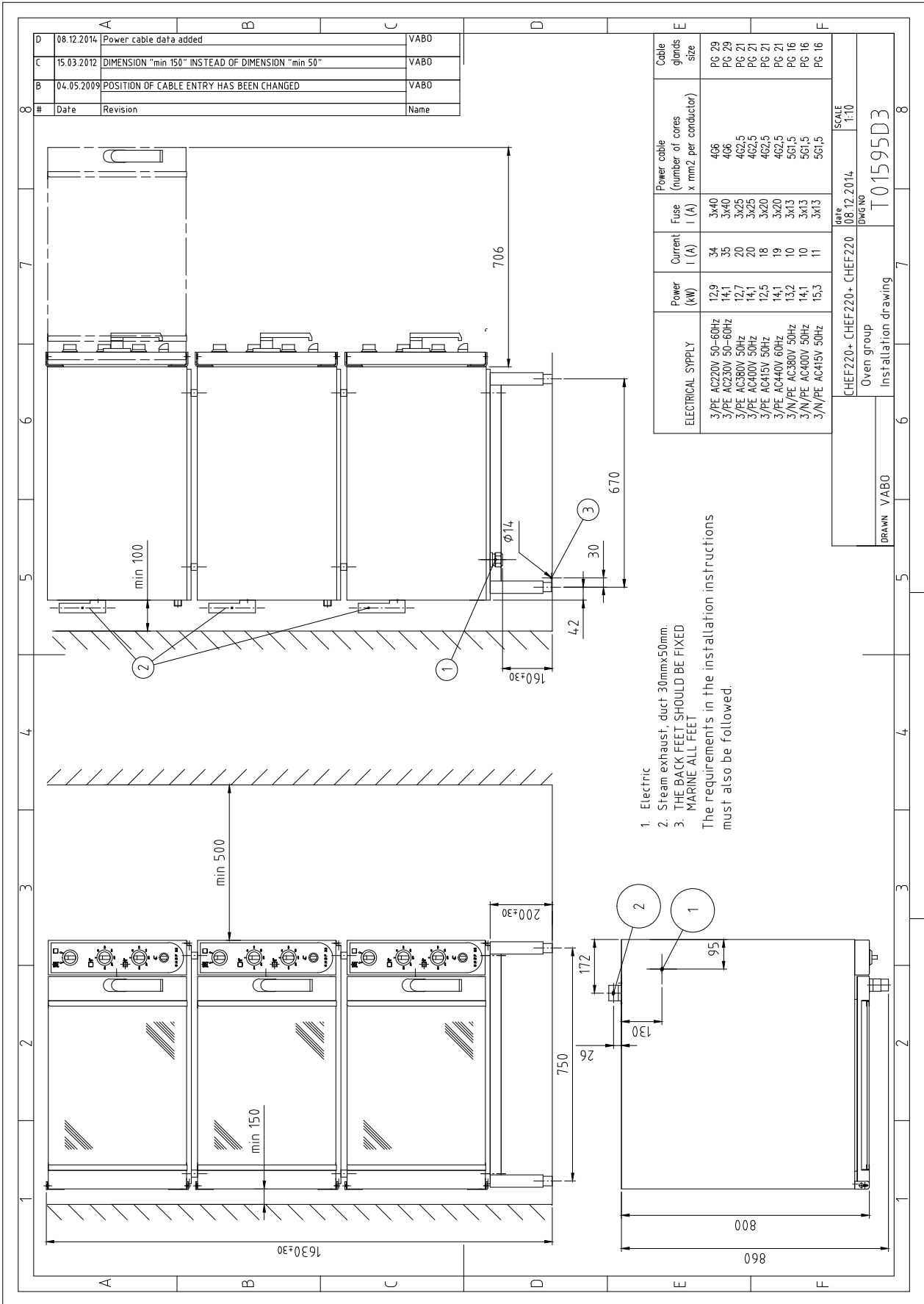
Installation drawing T01578 C3, Chef 220



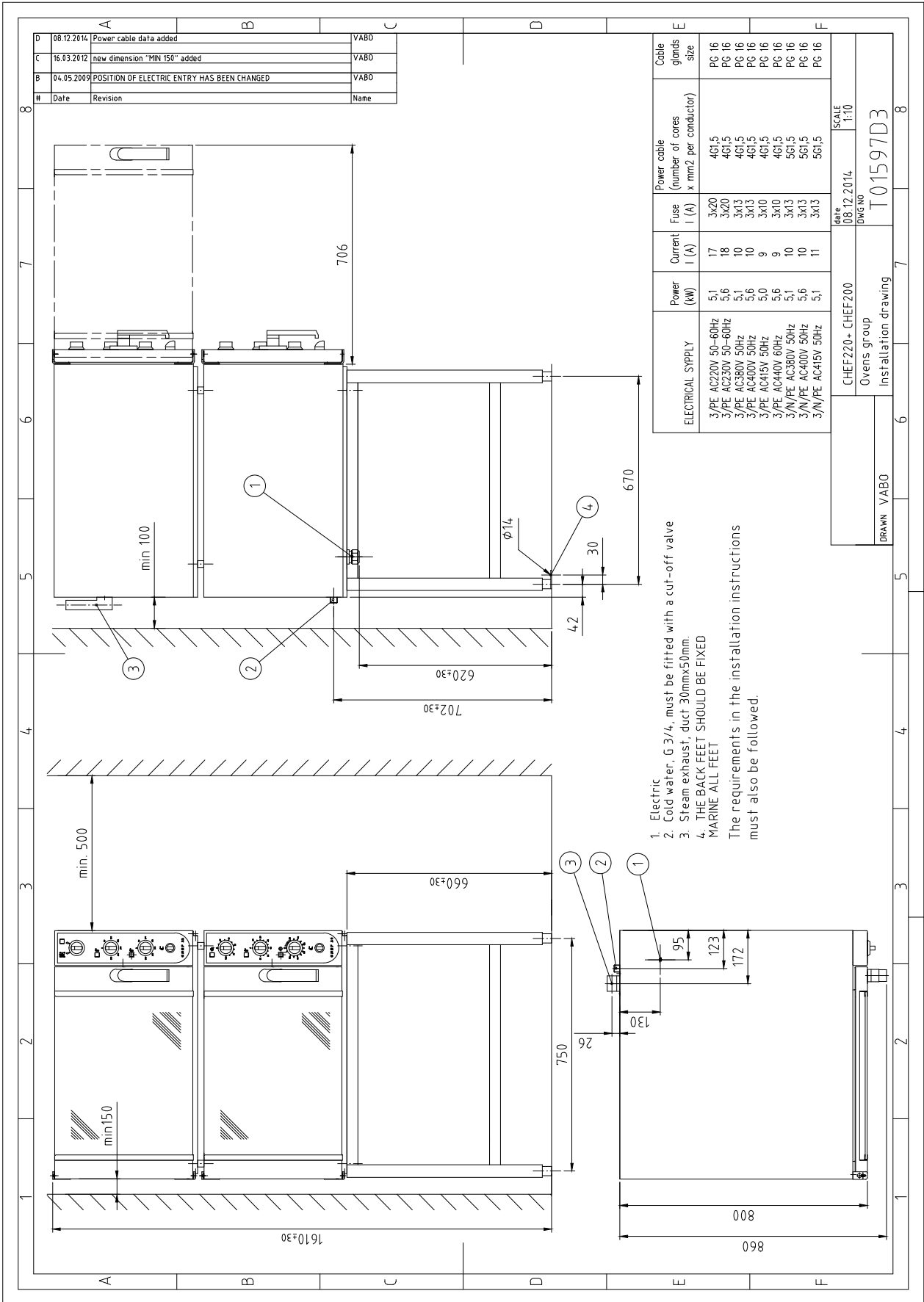
Installation drawing T01593 C3, Chef 220



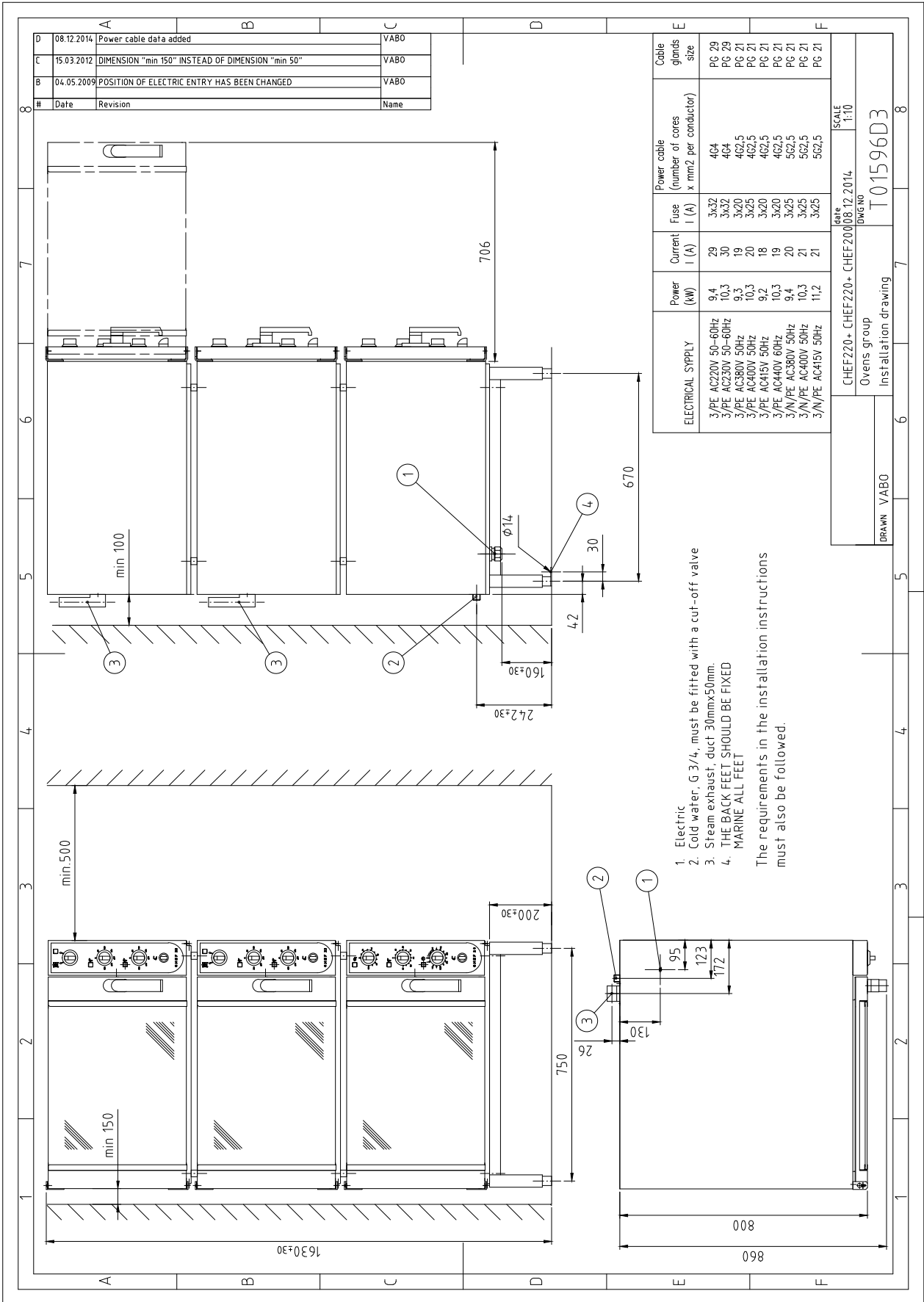
Installation drawing T01594 D3 , Chef 220 + Chef 220



Installation drawing T01595 D3 , Chef 220 + Chef 220 + Chef 220



Installation drawing T01597 D3 , Chef 220 + Chef 200




Installation drawing T01596 D3 , Chef 220 + Chef 220 + Chef 200

Item	Model	Specification
External dimensions WxDxH, oven	220	800x900x460 mm
External dimensions WxDxH, oven+stand	220	800x900x1360 mm
External dimensions WxDxH, two ovens+stand	220	800x900x1600 mm
External dimensions WxDxH, three ovens+stand	220	800x900x1630 mm
Internal dimensions of oven WxDxH	220	580x670x380mm
Capacity, 2 guide rails	220	1xGN2/1 or 2xGN1/1
Thermostat control range	220	50°C...300°C
Main material	220	Stainless steel oven interior, door and external casing. Door with double glass.
Recommended pre-heating time (200°C)	220	20 min
Weight including packing, oven	220	Approx. 70kg
Weight including packing, oven+stand	220	Approx. 89kg
Weight including packing, two ovens+stand	220	Approx. 150kg
Weight including packing, three ovens+stand	220	Approx. 197kg
Weight excluding packing, oven	220	Approx. 55kg
Weight excluding packing, oven+stand	220	Approx. 67kg
Weight excluding packing, two ovens+stand	220	Approx. 120kg
Weight excluding packing, three ovens+stand	220	Approx. 167kg
Package dimensions WxDxH, oven	220	883x976x627 mm
Package dimensions WxDxH, oven+stand	220	883x976x1690 mm
Package dimensions WxDxH, two ovens+stand	220	883x976x1767 mm
Package dimensions WxDxH, three ovens+stand	220	883x976x1787 mm
Electricity connection	220	See installation drawing
Conditions of use	220	Normal kitchen conditions, temperature above 0°C
Accessories	220	Stand Metos 2948 (height 900mm)
Accessories	220	Stand Metos 2948 Marine (height 900mm)
Accessories	220	Stand Metos 2928 (height 660mm)
Accessories	220	Stand Metos 2928 Marine (height 660mm)
Accessories	220	Stand Metos 2928 with 10 pcs. GN1/1 guide rails
Accessories	220	Stand Metos 2928 with wheels
Accessories	220	Stand Metos 2928 with wheels and 10 pcs. guide rails
Accessories	220	Stand Metos 2908 (height 200mm)
Accessories	220	Stand Metos 2908 Marine (height 200mm)

220=CHEF 220

A=3/N/PE~400/230V 50Hz, C=3/N/PE~380/220V 50Hz, G=3/N/PE~415/240V 50Hz, H=3/PE~230V 50Hz, I=3/PE~220V 60Hz, J=3/PE~380 50Hz, K=3/PE~400V 50Hz, L=3/PE~415V 50Hz, M=3/PE~440V 60Hz, P=1/N/PE~220-240V 50Hz



The crossed-out wheeled bin means that within the European Union the product must be taken to separate collection at the product end-of life. This applies to your device but also to any enhancements marked with this symbol. Do not dispose of these products as unsorted municipal waste.

Valmistajan nimi / Tillverkarens namn / Manufacturer's name

METOS OY AB

Osoite / Adress / Address

04220 KERAVA
FINLAND

Vakuuttaa, että seuraava tuote / Försäkrar att följande produkt / Declare that the following product

Nimi, tyyppi tai malli / Namn, typ eller modell / Name, type or model

Uuni / Ugn / Oven series METOS Chef
Mallit / Modeller / Models : 200, 220, 240, 40T, 50T

on seuraavien direktiivien asiaankuuluvien säännösten mukainen / överensstämmer med tillämpliga bestämmelser i följande direktiv / is in conformity with the relevant provisions of the following directives

MD 2006/42/EC, LVD 2014/35/EU, EMC 2014/30/EU, RoHS 2011/65/EC, WEEE 2012/19/EU

ja lisäksi vakuuttaa, että seuraavia yhdenmukaistettuja standardeja (tai niiden osia/kohtia) on sovellettu / och försäkrar dessutom att följande harmoniserade standarder (eller delar/paragrafer) har använts / and furthermore declares that the following harmonised standards (or parts/clauses) have been used

EN ISO 12100:2010, EN ISO 13857:2019, EN 61000-6-1:2019, EN 61000-6-3,
EN 60204-1:2018

ja lisäksi vakuuttaa, että seuraavia muita standardeja (tai niiden osia/kohtia) on sovellettu / och försäkrar dessutom att följande andra standarder (eller delar/paragrafer) har använts / and furthermore we declare that the following other standards (or parts/clauses) have been used

EN 60335-1:2020, EN 60335-2-36:2017, EN 60335-2-42

Alla mainittu henkilö on valtuutettu kokoamaan teknisen tiedoston / Nedan nämada person är bemyndigad att sammanställa den tekniska dokumentfilen / The person mentioned below is authorized to compile the technical file

Risto Koskelainen

Metos Oy Ab, Ahjonkaarre, 04220 Kerava, Finland

Tämä vaatimustenmukaisuusvakuutus on annettu valmistajan yksinomaisella vastuulla. Edellä kuvattu vakuutuksen kohde on unionin asiaankuuluvan yhdenmukaistamislainsäädännön vaatimusten mukainen.

Denna EU-försäkran om överensstämmelse utfärdas på tillverkarens eget ansvar. Föremålet för försäkran ovan överensstämmer med den relevanta unionslagstiftningen om harmonisering.

This declaration of conformity is issued under the sole responsibility of the manufacturer. The object of the declaration described above is in conformity with the relevant Union harmonisation legislation

Antopaikka ja päivä / Utfärdad på ort och datum / Place and date of issue

KERAVA

30.11.2021

Vakuutuksen antajan nimi ja asema / Namn och befattning av personen som försäkrar / Name and title of declaring person


Hannu Ahola – Director of Business Unit


Marko Immonen – R&D Manager

Manufacturer's name METOS OY AB
Address 04220 KERAVA FINLAND

Declare that the following product

Name, type or model Range series METOS Chef Models : 200, 220, 240
--

is in conformity with the essential requirements and other relevant requirements of the UK legislation. The products are in conformity with the relevant UK legislation

Electrical Equipment (Safety) Regulations 2016, Electromagnetic Compatibility (EMC) Regulations 2016, Machinery (Safety) Regulations 2008: Great Britain, The Restriction of the Use of Certain Hazardous Substances in Electrical and Electronic Equipment Regulations 2012, Regulations: Waste Electrical and Electronic Equipment (WEEE)
--

furthermore declares that the following harmonized standards (or parts/clauses) have been used

BS EN ISO 12100:2010, BS EN ISO 13857:2008, BS EN IEC 61000-6-1:2019, BS EN IEC 61000-6-3:2007, BS EN 60204-1:2018

and furthermore we declare that the following other standards (or parts/clauses) have been used

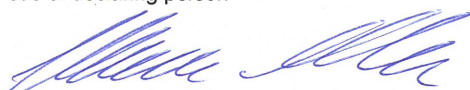
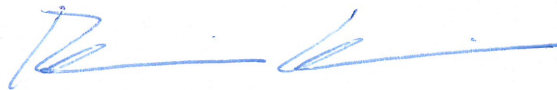
BS EN 60335-1:2012+A15:2021, BS EN 60335-2-42, BS EN 60335-2-36
--

The person mentioned below is authorized to compile the technical file

Otto Miettinen Metos Oy Ab, Ahjonkaarre, 04220 Kerava, Finland

This declaration of conformity is issued under the sole responsibility of the manufacturer. The object of the declaration described above is in conformity with the relevant UK legislation

Place and date of issue KERAVA 31.12.2022

Name and title of declaring person
 
Hannu Ahola – Director of Business Unit Risto Koskelainen – R&D Manager



Metos Oy Ab
Ahjonkaarre FI-04220 Kerava, Finland
tel. +358 204 3913
www.metos.com