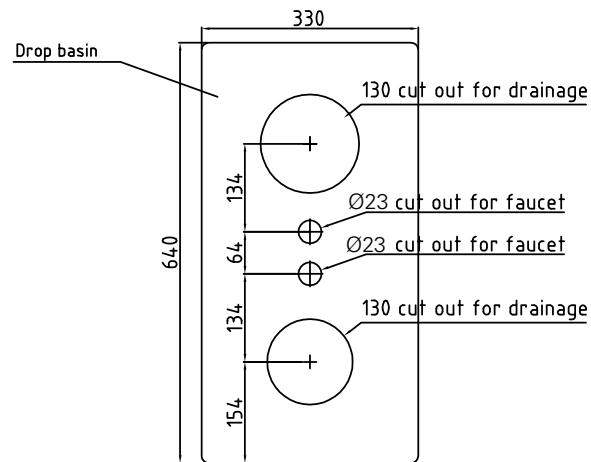
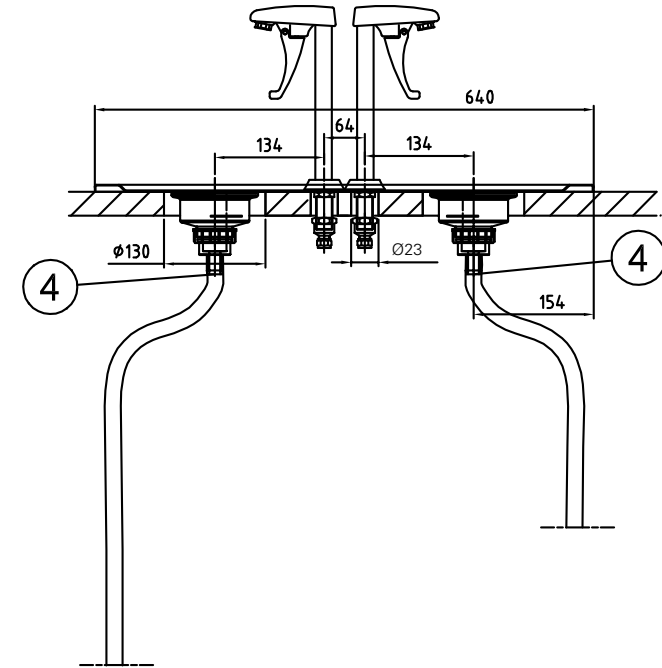
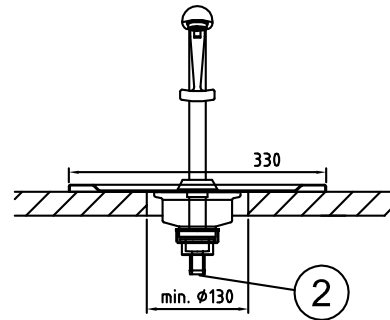


## Installation on top of the table

### Drop-in Water dispenser Metos D-IWD-N-2 mechanical

The counter, where drop-in units are installed, must be damp-proof and strong enough to bear the appliance weight.

Net weight:  
D-IWD-N-2 4 kg



The holes to the table for fastening the faucet and drainage.

- ② Cold water connection: R1/2"; max 500 kPa
- ④ Drain: Connection for hose with 18 mm inner diameter. Hose not included in the delivery.