

# Combi kettle Metos Proveno 4G 300E

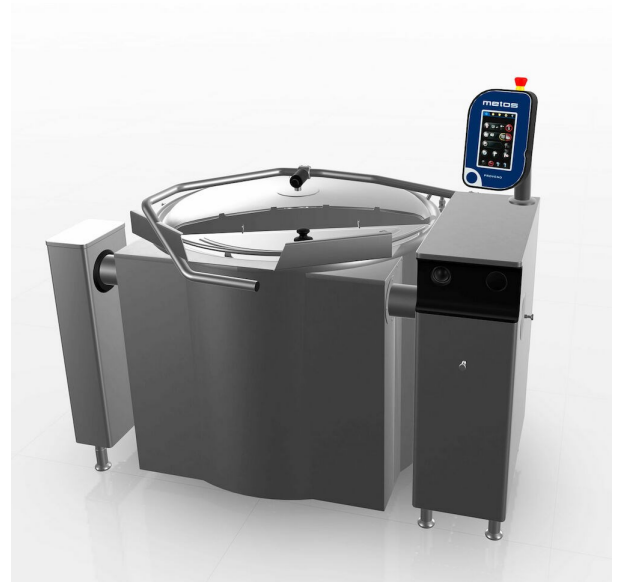
Proveno 300: gross vol. 333 l, net vol. 300 l, boiling space 33 l

Metos Proveno is a Finnish-made smart mixing combi-kettle. Reliable automation ensures routine food production without constant care or monitoring. Programming and management of recipes is easier than ever with the help of time-saving audio-visual communications features. Metos Proveno can be customised according to the user needs with the help of the respective features and accessories. Optimal ergonomics, ease of use and effortless cleaning make the hygienic and energy-saving Metos Proveno a user-friendly and economical option.

Both fixed and free-standing (optional) installation is possible.

The control panel of the Metos Proveno is fully raised with a highly visible and easy-to-read digital interface which is protected from knocks as well as steam rising from the kettle. All parts that become dirty in everyday use such as, for example, mixers and scrapers, are easily removable without any special tools and are dishwasher-safe. The sturdy stainless-steel lid has a Safety Grid Lid to facilitate adding of raw ingredients. Room for chef's tools is available on the control pillar top.

An automatically filled steam jacket means that the steam kettle is filled with water independently. It is possible to group Metos Proveno 4G combi-kettles by connecting them to other Metos 4G kettles and fixed Proveno 2G and 3G kettles without an intermediate support pillar between the kettles. The tilting height from the pouring spout to the floor is 600 mm. An elevated installation



frame is available and can be customised to the desired tilting height.

#### DELIVERY INCLUDES:

- a powerful stainless-steel mixing tool for all mixing, fitted with detachable and easy to clean scrapers - Heavy Duty mixing tool - a standard feature in 300 and 400 l combi-kettles
- a quick release stainless steel lid with a safety grid. Dishwasher safe. The rotating mechanism in the lid enables washing the lid even in the upright position while fixed to the kettle.
- stainless steel measuring stick, which is also dishwasher safe
- support pillar
- accessory hook

#### OPTIONS (ordered together with the Proveno 4G combi-kettle)

- electronic or direct steam operated model
- hand shower with three options: S1 standard, Heavy Duty S2 or Reel -in Hand shower S3
- kettle sensor for wireless HACCP - Metos IoLiving
- automatic cooling C2, C3i or C5i; please see further details below
- drainage with pressurised air for C3iPA or C5iPA cooling
- draw off taps and valves D1 and D2
- double water connection; please see further details below
- foot switch, enabling mixing while tilting
- socket outlet (230V 10A) behind the control panel
- powerful high-performance heating element for 150 to 300 l kettles (requires a higher amperage inlet fuse)
- alternative voltages
- welded and seamless bowl cover is available for increased hygiene. Due to the fully welded outer surface, the whole device is urethane insulated ensuring excellent energy efficiency.

#### INSTALLATION OPTIONS

- fixed installation: with a sub-surface installation frame
- fixed installation: with a surface installation frame
- elevated installation frames are available for fixed installation
- free standing installation: frame and feet
- free standing, midfloor kit 1
- free standing, midfloor kit 2
- group installation accessories are available for all options above
- it is possible to fix a free-standing combi-kettle to the floor with installation flanges which do not penetrate into the floor surface. Installation flanges do not prevent moving of the kettle as necessary.

#### ACCESSORIES

- wireless IoLiving HACCP
- multi mixing tool with IoLiving sensor
- strainer plate
- strainer plate extension for 300 to 400 l kettles
- pouring adapter

(spout reducer)

- whipping grid
- cleaning tool
- Heavy Duty Mixing tool for 150 to 200 l kettles
- blender lid kit Proveno 4G (40 to 100 l kettles)
- wide range of accessories for various cooking purposes

**MATERIALS** The kettle is made entirely of stainless steel with inner surface of acid resistant stainless steel.  
Protection class: IPX5

#### CONTROL PANEL

- a large control panel is fully raised from the control pillar of the kettle and equipped with a touch screen
- the screen is protected from knocks as well as steam rising from the kettle
- informative and simple touch screen with various symbols and language options
- only available functions are active in the menu
- adjustable audio-visual signals
- info and error pop-up messages
- service diagnostics are available on the display
- clear and highly visible non-reflecting status display
- current status related user instructions are available on the touch screen
- IP68 protected USB connection in the back of the panel
- software updates via USB
- programs are saved and downloaded via USB
- HACCP data is saved via USB
- various user levels, for example, making changes in the programming requires logging in
- extensive kettle settings database which is managed by users
- demo mode for new users
- comprehensive demo application is available
- users may alter mixing patterns and create new programmes
- energy saving mode for touch screen
- emergency stop function

#### TIMER

- possibility to set several timers
- timed starting function (day/month/week)
- timed STOP-function
- Cook&Hold for maintaining desired temperatures
- egg timer
- timed heating
- timed mixing
- timed mixing patterns
- timed first water drainage
- timed adding of water

#### PROGRAMMING

- programming is as standard feature
- tested ready-to-use standard recipes and kettle cleaning programs
- programming, modifying and saving functions are available on the touch screen
- unlimited number of programs and program phases
- favourite pages for most popular programs
- HACCP set points and alarms
- timed starting function (day/month/week)
- new and customised mixing patterns also for kettle washing

... more details on our web pages



## Combi kettle Metos Proveno 4G 300E

Product capacity	300 litres
Item width mm	1560
Item depth mm	1100
Item height mm	900/1535
Package volume	4.008
Unit of volume	m <sup>3</sup>
Package volume	4.008 m <sup>3</sup>
Package length	169
Package width	134
Package height	177
Package unit of dimension	cm
Package dimensions (LxWxH)	169x134x177 cm
Net weight	415
Net weight	415 kg
Gross weight	461
Package weight	461 kg
Unit of weight	kg
Connection power kW	47.6
Fuse Size A	80
Connection voltage V	400/230
Number of phases	3NPE
Frequency Hz	50/60
Startup current A	79.1
Protection rating (IP)	X5
Type of electrical connection	Fixed
Electrical conn. height mm	510
Cold water diam.	R½" (Ø15)
Cold water thread	External thread
Cold water flow l/min	20

## Combi kettle Metos Proveno 4G 300E

Cold water min pressure kPa	250
Cold water max pressure kPa	600
Cold water conn. height mm	200
Hot water diam.	R $\frac{1}{2}$ " (Ø15)
Hot water thread	External thread
Hot water min pressure kPa	250
Hot water max pressure kPa	600
Hot water conn. height mm	200